

# Hand Sanitizer Station

## Covid-19 Mitigation Hand Sanitizer Station



- Metal base (painted gray)
- Aluminum construction + snap frame sign
- Total height:
  - 180 cm with portrait sigs
  - 175 cm (landscape)

*The hand sanitizer floor station is a touch-less dispenser, ideal for high-traffic areas such as:*

- Retail Stores
- Grocery Stores
- Department Stores
- Banks
- Hotels
- Offices
- Schools
- Restaurants.

*Its sensor system allows easy dispensing, while the built-in shield keeps surrounding areas clean.*

## Features

- Easy installation and assembly
- Touch-less dispenser (increased hygienic performance)
- Adjustable height
- Ideal for high-traffic areas
- Custom branding sign available
- Freestanding / small footprint
- Vertically stable
- Built-in shield keeps surrounding area clean
- For use with gel or spray or foam antibacterial

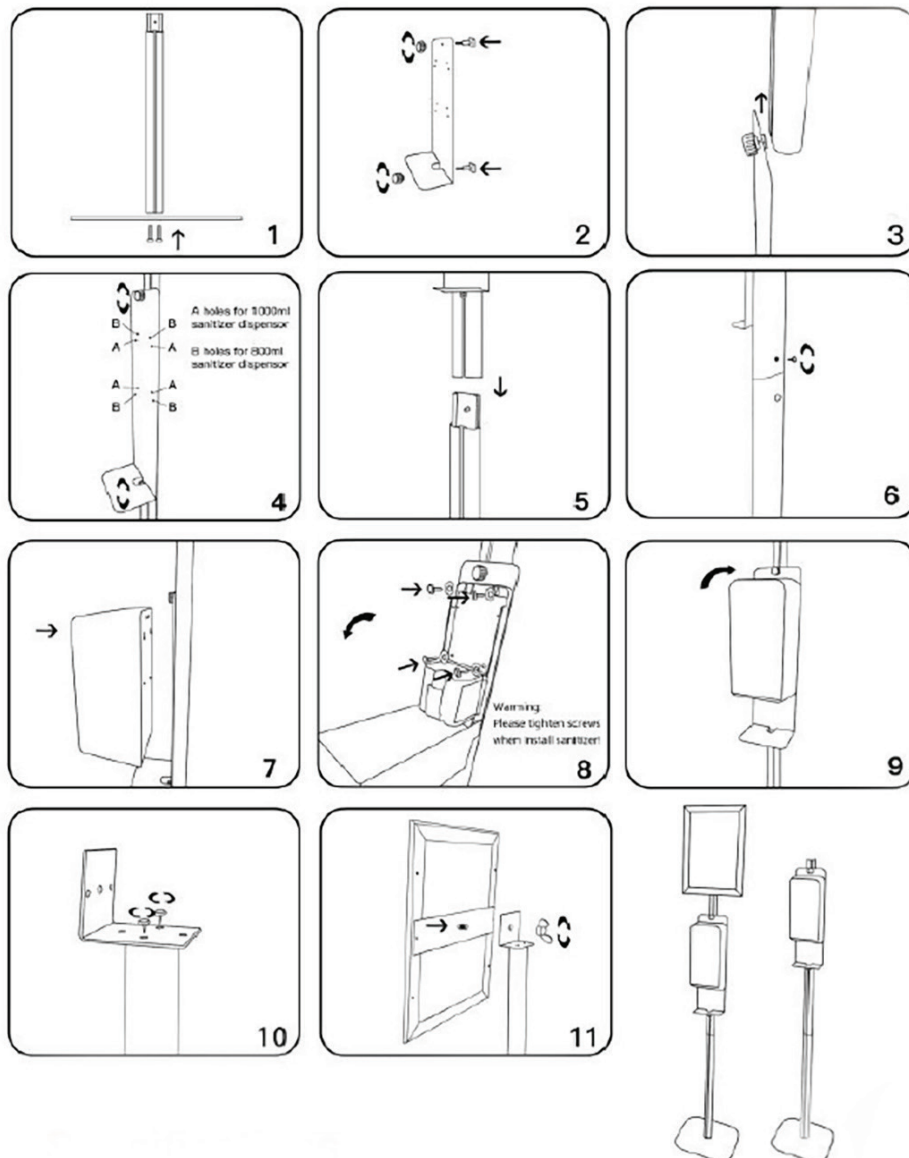
**LIGHTWEIGHT ◦ DURABLE ◦ PRACTICAL**

NOT FOR SURGICAL USE - COVID-19 MITIGATION ONLY



# Hand Sanitizer Station

## Install Instructions



**LIGHTWEIGHT ◦ DURABLE ◦ PRACTICAL**

NOT FOR SURGICAL USE - COVID-19 MITIGATION ONLY

